



Firefox | Teradici PCoIP Management Console - L... | +

https://10.1.1.44/Login.php?cmd=logout

Most Visited | Getting Started | Suggested Sites | Teradici PCoIP Manag... | Toshiba App Place | Web Slice Gallery


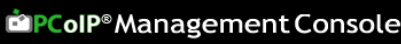
You have successfully logged out.
Enter password to login again.

Password:

Firefox | Teradici PCoIP Management Console | +

https://10.1.1.44/Default.php

Most Visited | Getting Started | Suggested Sites | Teradici PCoIP Manag... | Toshiba App Place | Web Slice Gallery

HOME
DEVICES
GROUPS
PROFILES
POWER
UPDATE
SETTINGS
LOGS
LOGOUT
HELP ?

Home

Manage Devices
Add/edit Zero Clients and hosts

Manage Groups
Create/edit device groupings,
Check profile status,
Create/edit AutoConfig

Manage Profiles
Create/edit device configurations

Manage Power
Zero Client remote power down,
reset PCoIP processors, power
off hosts

Update Firmware
Upload new firmware to devices

Monitor Device Logs
Configure device log collection

Site Status

PCoIP Devices:		
Zero Clients	Tera2	2 online / 2 offline
	Tera1	0 online / 0 offline
Hosts	Tera2	1 online / 1 offline
	Tera1	0 online / 0 offline
Sessions		0 active

DNS SRV Records:

Management Console **No record found**

Connection Broker **No record found**

Firefox | Teradici PCoIP Management Console | https://10.1.1.44/DeviceMgr.php

TERADICI™ PCoIP® Management Console

HOME DEVICES GROUPS PROFILES POWER UPDATE SETTINGS LOGS LOGOUT HELP ?

Device Management

+ Device Discovery (optional)

Link Devices

HOSTS (deselect)	Group	ZERO CLIENTS (deselect)	Group
Discovered 130513-14	Ungrouped	Discovered 130513-13	Ungrouped
pcoip-host-0030040e6340	IO Corp Hosts	pcoip-portal-0030040e...	IO Corp
		Discovered 130501-12	IO Corp
		Discovered 130516-15	Ungrouped

+ Legend

Update

Update All

Filter

Text

Field

Name

Processor Family

All Devices

TERADICI™ PCoIP® Mana

HOME DEVICES GROUPS PROFILES POWER UPDATE SETTINGS LOGS

Device Management

+ Device Discovery (optional)

Link Devices

HOSTS (deselect)	Group	ZERO CLIENTS (deselect)	Group
Discovered 130513-14	Ungrouped	Discovered 130513-13	Ungrouped
pcoip-host-0030040e6340	IO Corp Hosts	pcoip-portal-0030040e2db5	IO Corp
		Discovered 130501-12	IO Corp
		Discovered 130516-15	Ungrouped

Device Summary

Name: pcoip-portal-0030040e2db5
 Label: pcoip-portal-0030040e2db5
 Unique ID: 00-30-04-0E-2D-B5
 Mac address: 00-30-04-0E-2D-B5
 FQDN: Not Available
 Firmware: 4.0.2
 Processor: Tera2 ID: TERA2321, rev:0.0
 IP address: 10.1.1.179
 Peered to (MAC): 00-30-04-0E-63-40
 Peered to (IP): 10.1.1.108
[Click to view Details](#)
[Delete this Device](#)
[View Device Log](#)

Device Event Log

[Return to previous page](#)

[Retrieve updated configuration and log data from device](#)

Save File...

```
*****  
*** LOGS RETRIEVED USING PCoIP MC 1.8.0  
*** PCoIP MC DEVICE NAME: pcoip-portal-0030040e2db5  
*** GROUP: IO Corp  
*** TYPE: Zero Client  
*** IP: 10.1.1.179  
*** MAC: 00-30-04-0E-2D-B5  
*****  
***** Device Configuration *****  
*****  
Enable DHCP = True  
IP Address = 10.1.1.179  
Subnet Mask = 255.255.255.0
```

Device Event Log

[Return to previous page](#)

[Retrieve updated configuration and log data from device](#)

Save File...

```
*****  
*** LOGS RETRIEVED USING PCoIP MC  
*** PCoIP MC DEVICE NAME: pcoip-p  
*** GROUP: IO Corp  
*** TYPE: Zero Client  
*** IP: 10.1.1.179  
*** MAC: 00-30-04-0E-2D-B5  
*****  
*****  
En  
IP Address = 10.1.1.179  
Subnet Mask = 255.255.255.0
```

Opening client_10_1_1_179_(00-30-04-0E-2D-B5).txt

You have chosen to open:

- client_10_1_1_179_(00-30-04-0E-2D-B5).txt
which is a: Text Document
from: https://10.1.1.44

What should Firefox do with this file?

Open with: Notepad (default)

Save File

Do this automatically for files like this from now on.

OK Cancel

Firefox | Teradici PCoIP Management Console | Log In

https://10.1.1.179/login.html

Most Visited | Getting Started | Suggested Sites | Teradici PCoIP Manag... | Toshiba App Place | Web Slice Gallery

PCoIP® Zero Client

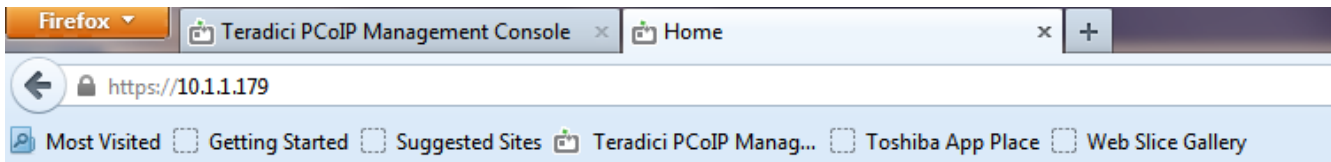


Log In

Please enter the administrative password to access this device.

Password:

Idle Timeout:




[Log Out](#)

PCoIP® Zero Client

Home Configuration / Permissions / **Diagnostics** / Info / Upload

- Event Log
- Session Control
- Session Statistics
- Audio
- Display
- PCoIP Processor



PCoIP® Zero Client

PCoIP® device status and statistics for the current session.

Event Log Messages:

Event Log Filter Mode:

Enable Syslog:

Identify Syslog Host By: IP address FQDN

Syslog Host IP Address: . . .

Syslog Host Port:

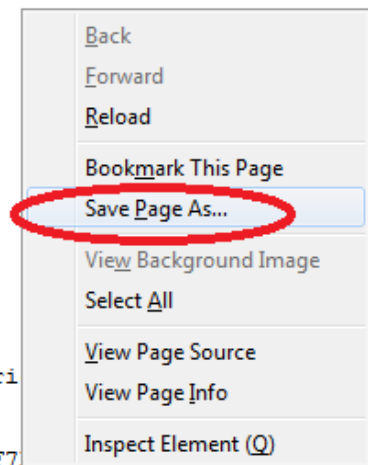
Syslog Facility:

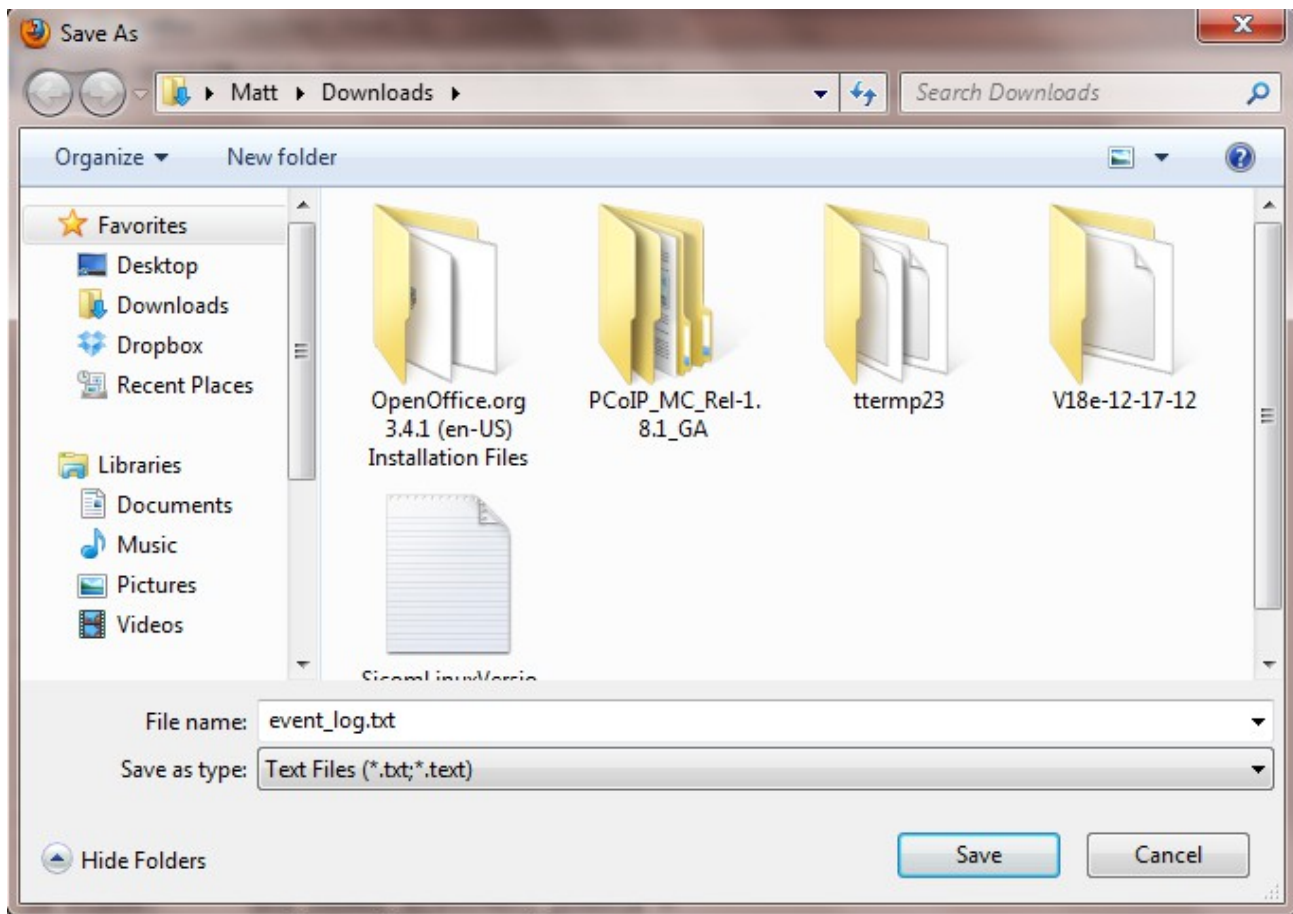
Enhanced logging mode:

Category	Enable enhanced logging
AUDIO	<input type="radio"/>
MANAGEMENT CONSOLE	<input type="radio"/>
NETWORKING	<input type="radio"/>
ONESIGN	<input type="radio"/>
SESSION NEGOTIATION	<input type="radio"/>
SMARTCARD	<input type="radio"/>
SYSTEM	<input type="radio"/>
USB	<input checked="" type="radio"/>
VIDEO	<input type="radio"/>

```
*****
***** Device Configuration *****
Firmware Version: 4.0.2      Firmware Build ID: rc_tera_r4_0_2@13079
*****
IN VPD:                      mac_addr = 00-30-04-0E-2D-B5
IN FLASH:                    peer_mac_addr = 00-30-04-0E-63-40
IN FLASH:                    ip_address = 10.1.1.179
IN FLASH:                    peer_address = 10.1.1.130
IN FLASH:                    cms_address =
IN OFD:                      subnet_mask = 255.255.255.0
IN FLASH:                    gateway = 10.1.1.1
IN FLASH:                    primary_dns = 65.106.1.196
IN FLASH:                    secondary_dns = 65.106.7.196
IN FLASH:                    language = ENGLISH
IN FLASH:                    enable_audio = enabled
IN FLASH:                    enable_auto_reconnect = enabled
IN OFD:                      enable_dhcp = enabled
IN FLASH:                    enable_slp_discovery = enabled
NOT FOUND:                   enable_dual_monitor = disabled
IN FLASH:                    enable_event_log_async = disabled
IN VPD:                      unique_id = 00-30-04-0E-2D-B5
IN VPD:                      serial = L12090019235
IN VPD:                      version = 6293D008120-A
NOT FOUND:                   vlan_tag = 0
NOT FOUND:                   client_power_button = soft and hard
NOT FOUND:                   osd_top_text =
IN FLASH:                    enable_host_discovery = disabled
IN FLASH:                    dns_based_discovery_prefix =
NOT FOUND:                   enable_cmi_diagnostic_log = disabled
IN FLASH:                    keyboard_layout = United States of America ISO-8859-1
IN FLASH:                    osd_screen_saver_timeout = 30
IN FLASH:                    dns based discoveryv delay = 300
```

```
*****
***** Device Configuration *****
Firmware Version: 4.0.2      Firmware Build ID: rc_tera_r4_0_2@13079
*****
IN VPD:          mac_addr = 00-30-04-0E-2D-B5
IN FLASH:       peer_mac_addr = 00-30-04-0E-63-40
IN FLASH:       ip_address = 10.1.1.179
IN FLASH:       peer_address = 10.1.1.130
IN FLASH:       cms_address =
IN OFD:         subnet_mask = 255.255.255.0
IN FLASH:       gateway = 10.1.1.1
IN FLASH:       primary_dns = 65.106.1.196
IN FLASH:       secondary_dns = 65.106.7.196
IN FLASH:       language = ENGLISH
IN FLASH:       enable_audio = enabled
IN FLASH:       enable_auto_reconnect = enabled
IN OFD:         enable_dhcp = enabled
IN FLASH:       enable_slp_discovery = enabled
NOT FOUND:     enable_dual_monitor = disabled
IN FLASH:       enable_event_log_async = disabled
IN VPD:         unique_id = 00-30-04-0E-2D-B5
IN VPD:         serial = L12090019235
IN VPD:         version = 6293D008120-A
NOT FOUND:     vlan_tag = 0
NOT FOUND:     client_power_button = soft and hard
NOT FOUND:     osd_top_text =
IN FLASH:       enable_host_discovery = disabled
IN FLASH:       dns_based_discovery_prefix =
NOT FOUND:     enable_cmi_diagnostic_log = disabled
IN FLASH:       keyboard_layout = United States of Ameri
IN FLASH:       osd_screen_saver_timeout = 30
IN FLASH:       dns_based_discovery_delay = 300
IN FLASH:       password_hash = DA8AF120A0AADA99D74CF7
```





```
NOT FOUND:      enable_cmi_diagnostic_log = disabled
IN FLASH:      keyboard_layout = United States of America ISO-8859-1
IN FLASH:      osd_screen_saver_timeout = 30
IN FLASH:      dns_based_discovery_delay = 300
IN FLASH:      password_hash = DA8AF120A0AADA99D74CF7B6DD0ED457BC26098C
```