

Setting the IP Address of the Access Point

Setting the IP Address can be done in two different ways:

- Manually using the USB Configuration Utility
- Automatically assigned from a DHCP server on your existing LAN when using the SNMP Manager Configuration Utility

Install the USB Driver

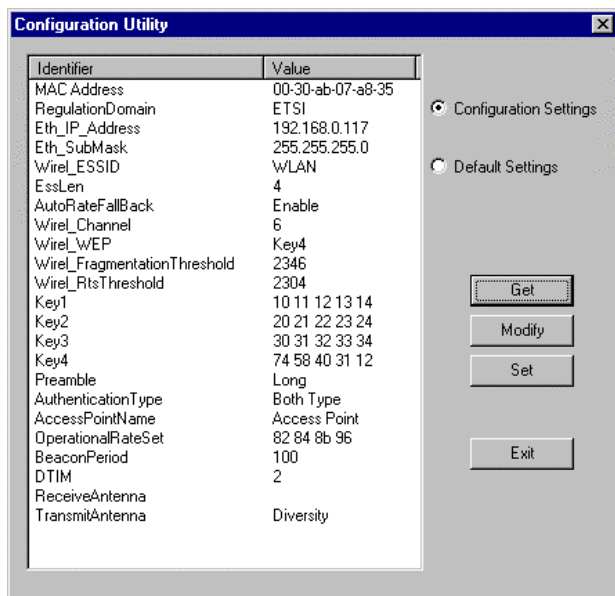
1. Connect the Access Point:
 - a. To your computer using the USB cable
 - b. To the LAN hub or switch using the Ethernet cable
 - c. To the power supply
2. Insert the Utility CD into the CD-ROM drive.
3. The Add/Found New Hardware Wizard will start on your computer. Specify the driver location as d:\Driver (d:\ is your CD-ROM drive).

Install the Configuration Tools

1. Insert the Utility CD into the CD-ROM drive.
2. Click Start | Run and enter "d:\Utility\setup.exe". Click OK.

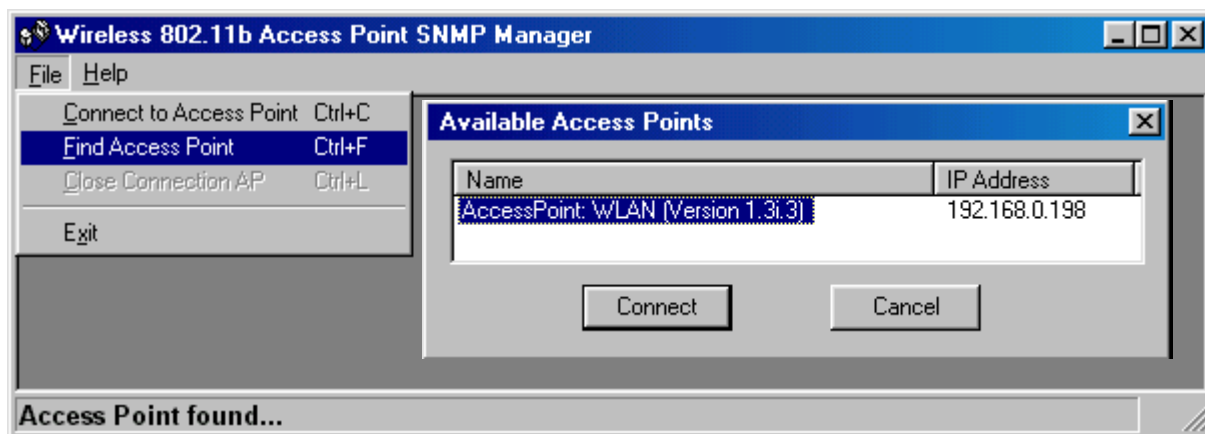
Setting the IP Address using the USB Configuration Utility

1. Connect the Access Point to your computer using the USB cable.
2. Select the USB Configuration Utility option from within the program group where you installed the configuration tools.
3. Click the *Configure* button, then click the *Get* button.
4. In the left column, click on the "Eth_IP_Address" identifier. Then click the *Modify* button.
5. Enter the IP Address, click OK. Then click the *Set* button.



Setting the IP Address using the SNMP Manager Configuration Utility

1. Select the SNMP Manager Configuration Utility option from within the program group where you installed the configuration tools.
2. Select the *Find Access Point* option from the *File* menu.
3. Highlight the desired Access Point. Click the *Connect* button.



Access Point Configuration

Configuration of the Access Point can be done locally using the USB Configuration Utility or remotely using SNMP Manager Configuration Utility.

USB Configuration Utility

1. Connect the Access Point to your computer using the USB cable.
2. Select the USB Configuration Utility option from within the program group where you installed the configuration tools.
3. Click the *Configure* button, then click the *Get* button.
4. In the left column, click on the identifier that you want to setup. Then click the *Modify* button.
5. Enter or select the values as appropriate for the identifier, click *OK*. Then click the *Set* button.
6. Exit the utility.

SNMP Manager Configuration Utility

1. Select the SNMP Manager Configuration Utility option from within the program group where you installed the configuration tools.
2. Connect to the Access Point.
 - If you know the IP Address
 - a. Select the *Connect Access Point* option from the *File* menu.
 - b. Enter the IP Address and "public" in the community field. Click *OK*.
 - If you do not know the IP Address
 - a. Select the *Find Access Point* option from the *File* menu.
 - b. Highlight the desired Access Point. Click the *Connect* button.
3. From the *Setup* menu, select the *Wireless LAN* option. Setup the *Privacy Options* and *Operational Settings* as appropriate.
4. From the other menus, make other setup changes as needed.
5. From the *File* menu, select the *Download Changes* option send the settings to the Access Point.
6. Exit the utility.

