

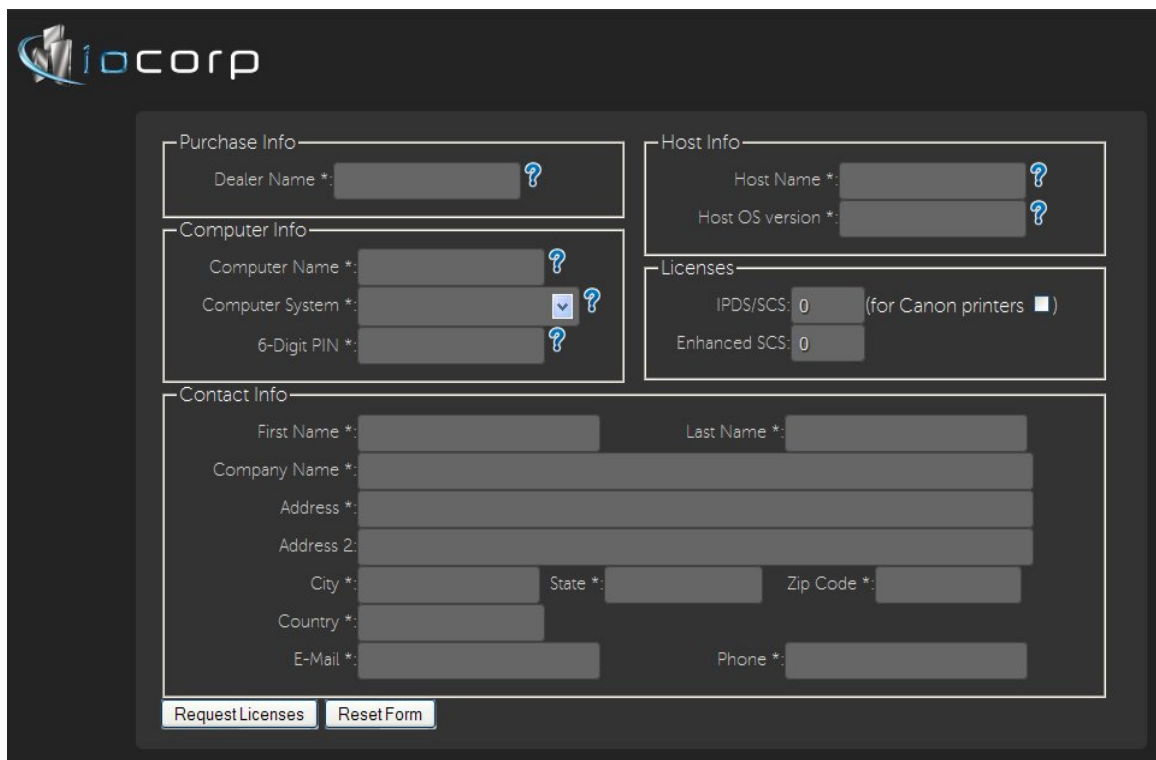
Adaptio Licensing Process

Note: This process assumes that the customer has already installed the **adaptio** Host Print Software for Windows product.

When **adaptio** is first installed, it provides a fully functional, single session printing solution that is running in evaluation mode. This means that each page printed will have a “not licensed” watermark printed on it.

To activate **adaptio** for the number of printer sessions desired and to eliminate the not licensed watermark, follow these steps:

1. The customer issues to the dealer a purchase order for the desired number of sessions and options.
2. The dealer places an order with I-O Corporation supplying the customer information.
3. Either the customer or the dealer generates a License Request by going to the Request an **adaptio** License page on the I-O web site (<http://iocorp.com/request-your-first-licenses.html>)
4. The following information must be entered:



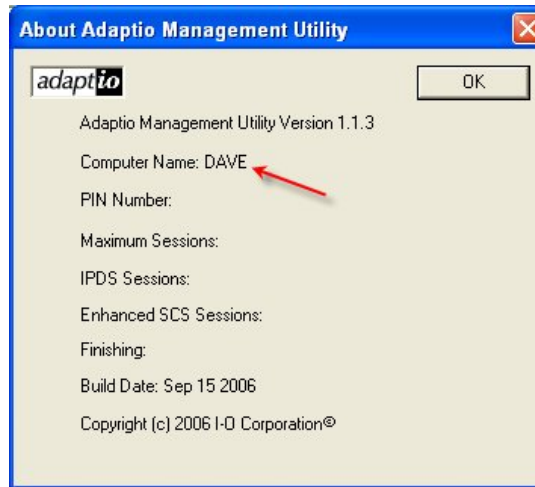
The screenshot shows the I-O Corporation logo at the top left. Below it is a dark-themed form with several sections:

- Purchase Info:** Dealer Name * (text input with a question mark icon).
- Host Info:** Host Name * (text input with a question mark icon) and Host OS version * (text input with a question mark icon).
- Computer Info:** Computer Name * (text input with a question mark icon), Computer System * (dropdown menu with a question mark icon), and 6-Digit PIN * (text input with a question mark icon).
- Licenses:** IPDS/SCS: 0 (for Canon printers) and Enhanced SCS: 0.
- Contact Info:** First Name *, Last Name *, Company Name *, Address *, Address 2 *, City *, State *, Zip Code *, Country *, E-Mail *, and Phone *.

At the bottom of the form are two buttons: "Request Licenses" and "Reset Form".

Dealer Name Enter the dealer's name in this field.

Computer Name This is the name of the computer on which **adaptio** is installed. This can be found on the **adaptio** Management Utility's Help About screen. Enter this name exactly as it is shown.



Computer System This is the type of Windows Operating System of the PC server.

6-Digit Pin: This is any numeric value that the customer chooses. It will be used as part of the license file as well as to help track licenses for the organization.

IBM Host Name Enter the primary IBM host here, such as a zSeries, or iSeries and the specific model of the host.

IBM Host OS Version Enter the operating system version here, such as V7R1.

Licenses Enter the number of desired licensed sessions. There is no selection for SCS sessions as they are included with the IPDS sessions. Check the box if this is a Canon printer, requiring Canon Finishing support. The Enhanced SCS session is capable of repurposing the SCS data stream to include form overlays, graphical elements, etc. This option also requires the purchase of the FormPort Designer application, or utilizing I-O's Form On Demand Design service.

Contact Information Enter the customer's contact information here. All fields must be completed.

5. Once the purchase order from the dealer and the License Request from the web site are received by I-O Corporation, they are matched. A license file is then generated.
6. The license file is then sent by e-mail to the person listed in the contact information. Instructions on how to apply the license file are also included in the e-mail. An **adaptio** installation CD will be shipped to the contact person for the initial order.

