

122 Keyboard AS/400  
Low Cost Printing  
Ethernet TN5250e iSeries TN3270e TCP/IP  
Windows CE

## I-O 5735e IPDS/SCS Printer Gateway



The I-O 5735e is a high speed Ethernet-in, Ethernet-out IPDS/SCS gateway print server designed to convert native IBM host print jobs to PCL, allowing them to be printed by a laser printer on the LAN. Supporting a single printer, the 5735e delivers IBM AFP/IPDS and SCS printing via TCP/IP, providing the control and printer feedback found in an IBM host environment.

### **High Speed Printing**

Attached to the LAN, the 5735e supports high-speed, high-performance printers. Without the bottleneck of a slow parallel port, the 5735e supports over 100 pages per minute. Whether printing from an IBM AS/400, iSeries, eServer i5 or a zSeries – S/390, fast printing can be obtained with laser printers supporting port 9100. In addition to the Ethernet connection, the 5735e has a parallel port to directly attach one printer (laser or dot-matrix).

### **Full Printing Control from IBM Host**

The 5735e offers the same reliable, full-function IBM host printing and control found with direct twinax/coax attached printers. With the 5735e, IBM host print jobs are not lost in the black hole of LAN printing. The 5735e provides bi-directional communication between the printer and the IBM host, allowing error reporting and page range printing.

### **Easy to Use**

I-O's Configuration Utility software is included with every 5735e. Whether selecting TCP/IP or SNA, configuration is made easy through the use of a menu-based utility.



---

## I-O 5735e IPDS/SCS Printer Gateway

---

# Ethernet I-O 5735e IPDS/SCS Printer Gateway

## Technical Specifications

### For AS/400, iSeries, eServer i5

- **Protocols**  
TCP/IP (PPR/PPD, TN5250e, LPR/LPD), SNA (APPC), AnyNet (SNA over TCP/IP)
- **IPDS Emulations**  
IBM 4028 AS1, 3812-2, 3816-1D/S, includes 4312/17 font support
- **SCS Emulations**  
IBM 3812-1, 4214, 5224, 5225, 5256
- **IPDS Towers**  
Supports all towers
- **System Requirements**  
OS/400 Release 3.1 or higher

### For S/390 – zSeries

- **Protocols**  
TCP/IP (PPR/PPD, LPR/LPD, TN3270e)
- **IPDS Emulations**  
IBM 4028 AS1, 3812-2, 3816-1D/S, includes 4312/17 font support
- **IPDS Towers**  
Supports all towers
- **System Requirements for OS/390 or MVS**  
PSF/MVS Version 2.2.0 with APR  
OW15599, MVS Scheduler with APRA  
0212236, TCP/IP Version 3.1 or higher

### For LAN Systems

- **Protocols**  
TCP/IP (LPR/LPD), IPX/SPX, NetBIOS, I-O DirectPort™ (Windows 9x Peer-to-Peer)
- **Supported LAN Hosts**  
Novell, Windows, Unix

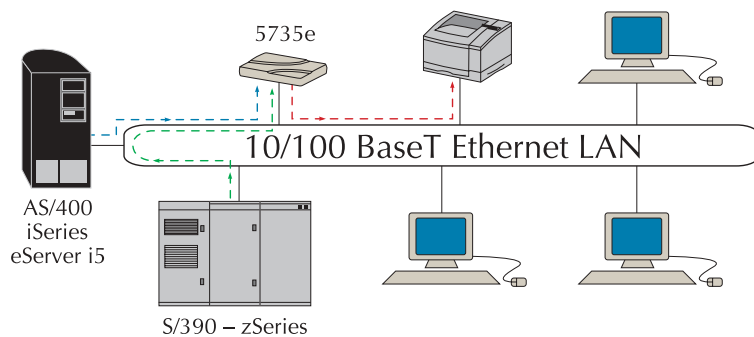
### Printers

- **Ethernet Connection**  
Port 9100, PCL 3/5e  
Auto-sensing 10/100 BaseT
- **Parallel Connection**  
Dot-matrix (SCS only), Laser (IPDS/SCS)

### General

- **Supports 1 Printer**

- **Printer Ports**  
One IEEE 1284 bi-directional Centronics parallel port
- **Power Supply**  
100-240V auto-switching (IEC)
- **Configuration**  
I-O Configuration Utility requires a Windows 95 or higher PC
- **Physical**  
8-7/16 x 5-9/16 x 1-3/8 inches  
(21.5 x 14.1 x 3.5 cm)  
14.3 ounces (405 grams)  
Temperature range: +40° to 100° F  
(5° to 42° C)  
Relative humidity: 10% to 90% noncondensing



## Features & Benefits

- **High Speed Printing, 100+ ppm** – Data conversion is accomplished at the 5735e and sent to the printer via the Ethernet LAN. The 5735e takes advantage of high-speed, high-performance printers without the bottleneck of the parallel port.
- **Ethernet-in, Ethernet-out** – The 5735e can be installed anywhere on the LAN.
- **AFP/IPDS & SCS Printing** – IBM host printing to LAN attached printers can be accomplished easily in an Ethernet environment.
- **Full IBM Host Control of Print Jobs** – The 5735e provides bi-directional communication between the host and the printer, via port 9100 and PJI commands.
- **Remote Printing** – The printer can be attached locally or remotely via a WAN or VPN network. The printer does not need to be next to the 5735e.
- **Versatility** – Print jobs can be redirected to a different printer via the I-O Configuration Utility.
- **One Parallel Port** – One laser or dot-matrix printer can be directly attached to the 5735e for IBM host or LAN printing jobs.
- **I-O's Award Winning Printer Emulations** – All AFP/IPDS and SCS functions such as True Print Complete, duplex, page offset, COR, fonts, and barcode, are fully supported by the 5735e.



I-O 5735e IPDS/SCS Printer Gateway