



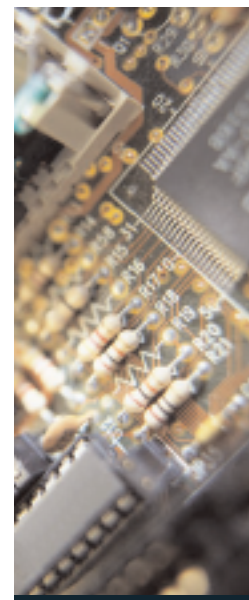
I-O 5435e AFP/IPDS Print Server

I-O 5435e Print Server enables AFP/IPDS printing over an Ethernet LAN to a PCL 5e laser printer.

In addition to operating as an AFP/IPDS-to-LAN print server for IBM System i5, iSeries, AS/400, and zSeries-S/390 Mainframe systems, the I-O 5435e also functions as a standard Ethernet print server for Windows, Novell, and Unix environments. The I-O 5435e also supports IBM SCS/DCS printing from IBM hosts. Industry standard TCP/IP, NetBIOS, and SNA protocols provide the user with printer connectivity to virtually any host or client.

The unique design of the I-O 5435e AFP/IPDS Print Server allows a single PCL 5e laser printer to appear to the host simultaneously as two printer types (IPDS and SCS). Multi-host capabilities allow up to ten IBM hosts to send SCS/DCS printing to a single printer.

In today's complex LAN environment, I-O's easy-to-use Configuration Utility makes initial set up, administration, and updates painless and simple.





I-O 5435e AFP/IPDS Print Server Specifications & Features

For System i5, iSeries, AS/400

Protocols: TCP/IP (PPR/PPD, TN5250e, LPR/LPD), SNA (APPC), AnyNet (SNA over TCP/IP)

IPDS Emulations: IBM 4028 AS1, 3812-2, 3816-1D/S, includes 4312/17 font support

SCS Emulations: IBM 3812-1

IPDS Towers: Supports all towers

System Requirements: OS/400 Release 3.1 or higher; PSF/400

For zSeries-S/390

Protocols: TCP/IP (PPR/PPD, TN3270e, LPR/LPD)

IPDS Emulations: IBM 4028 AS1, 3812-2, 3816-1D/S, includes 4312/17 font support

IPDS Towers: Supports all towers

System Requirements for OS/390 or MVS: PSF/MVS Version 2.2.0 with APR OW15599; MVS Scheduler with APRA 0212236, TCP/IP Version 3.1 or higher

For LAN Systems

Protocols: TCP/IP (LPR/LPD), NetBIOS, I-O DirectPort™ (Windows 95/98/ME Peer-to-Peer)

Supported LAN (ASCII) Hosts: Windows, UNIX

General

Ethernet Connection: 10BaseT, 100BaseT (auto-sensing)

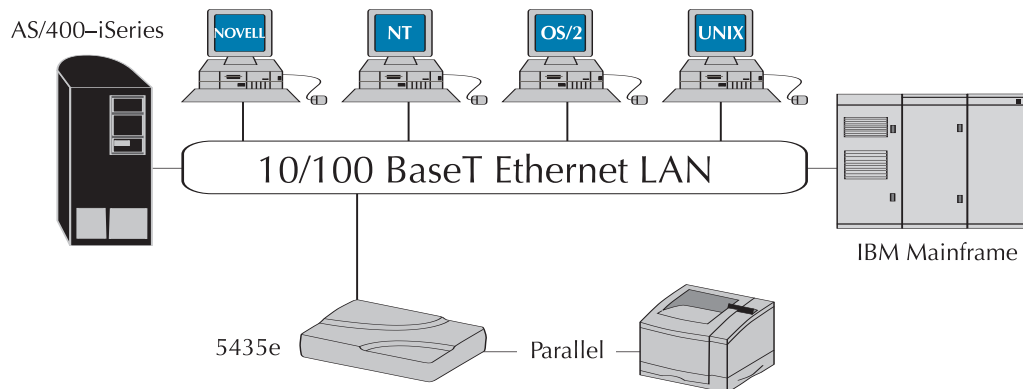
Printers Supported: Any PCL 5e printer

Printer Ports: One IEEE 1284 bi-directional Centronics parallel port

Power Supply: 100-240V auto-switching

Configuration: I-O PrintControl™ utility requires a Windows 95 or higher system

Physical: 8 7/16" x 5 9/16" x 1 3/8" (21.5 x 14.1 x 3.5cm), 14.3 oz. (405 gr.), Temperature range: +40° to 100° F (5° to 42° C), Relative humidity: 10% to 90% noncondensing



Features & Benefits

- **AFP/IPDS Printing Over a LAN:** Both AFP/IPDS host printing and standard LAN printing can be accomplished in an Ethernet environment.
- **Off-Loading of Data Conversion:** Increased speed is a result of converting EBCDIC data at the print server rather than at the host or PC.
- **True Print Complete:** Users are notified when the print job is finished, taking the guess work out of printing.
- **Duplex:** Printing can be done on both sides of a page. The full functionality of a duplex printer can be utilized.
- **Page Offset Functions:** Provides flexibility in page positioning with no need to modify host applications.
- **Supports over 100 AFP/IPDS Fonts:** There are more fonts to choose from than other AFP/IPDS interfaces.
- **On-Board Flash Memory:** Allows for field upgrades providing the latest new features from I-O.
- **Simultaneous, Multi-Protocol Printing:** Maximizes printer utilization by supporting printing from a variety of hosts, servers and clients.
- **PrintControl™ Utility:** Provides simple configuration from a local or remote network.
- **High-Speed Parallel Port:** Takes advantage of the LAN printer's maximum print speed even when processing.