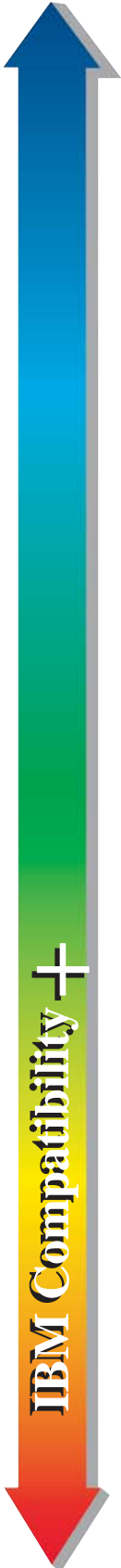




"Products That Work"

# I-O 5430e

Multi-protocol Print Server for AS/400 – iSeries & Mainframe -to-LAN Printing



The I-O 5430e is a single port, multi-protocol print server that combines Ethernet, IBM AS/400 – iSeries, and Mainframe printing over a LAN.

The I-O 5430e attaches one parallel printer directly to a 10 or 100 Mbps Ethernet LAN, and supports multiple protocols including TCP/IP, IPX/SPX, and NetBIOS. This support allows the I-O 5430e to be used with a variety of operating systems including Windows, Novell, Unix, OS/400, and OS/390. The I-O 5430e also supports one IBM printer session featuring I-O's field-proven IBM printer emulations. Combined, these unique characteristics enable users to share printer resources even when several different operating systems are in use.

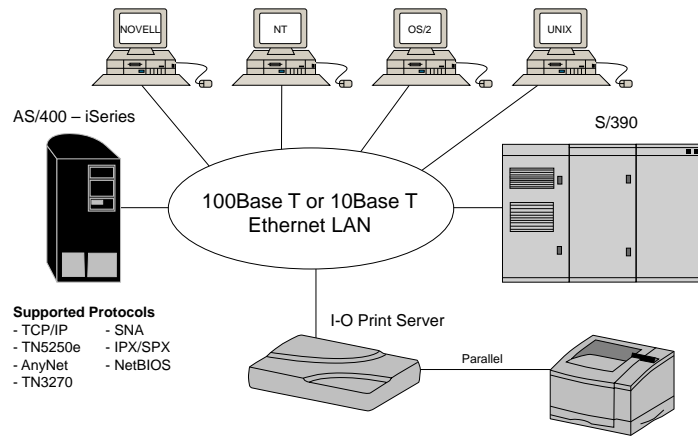
In addition to operating as an Ethernet LAN print server, the I-O 5430e supports AS/400 – iSeries and IBM Mainframe printing over TCP/IP, SNA (APPC), and AnyNet (SNA encapsulated in TCP/IP). Using any one of these protocols, the I-O 5430e allows the LAN attached printer to offer the same reliable, full-function IBM host printing support as a direct system-attached 5250/3270 printer. These protocols also offer users controlled host printing directly from the IBM host. TN5250e and TN3270e add simple, one step set-up (auto-configuration) as well.

The I-O 5430e can also speed up IBM host printing. Since the IBM EBCDIC to ASCII data conversion is done by the I-O 5430e it frees the host, or a client PC from performing this resource-intensive task. This means a faster first page out, and overall increased speed.

## I-O Corporation

1490 North 2200 West Suite 100 • Salt Lake City, Utah 84116 • Phone: (801) 973-6767 • Fax: (801) 974-5683 • <http://www.iocorp.com>

## I-O 5430e Multi-protocol Print Server



## IBM Features

- Supported Protocols for AS/400 – iSeries Printing:
  - TCP/IP (TN5250e)
  - TCP/IP (LPR/LPD)
  - SNA (APPC)
  - AnyNet (SNA over TCP/IP)
- Supported protocols for IBM Mainframe Printing:
  - TCP/IP (PPR/PPD, LPR/LPD)
  - TN3270e
- Supported IBM Printer Emulations:
  - 3812-1 (SCS)
  - 4214
  - 5224/25/56
  - 3287

## LAN (ASCII) Features

- Supported Printer Drivers for EBCDIC-ASCII Conversion:
  - HP PCL
  - IBM Proprinter, PPDS
  - Epson ESC/P2, FX, LQ
  - Generic
- Supported Protocols for LAN (ASCII) printing:
  - TCP/IP (LPR/LPD)
  - IPX/SPX
  - NetBIOS
  - I-O TCP/IP DirectPort™ Printing (Windows 95/98 Peer-to-Peer)
- Supported LAN (ASCII) Hosts:
  - Novell
  - Windows
  - UNIX
- FLASH Memory
- SNMP Compliant
- Supported Ethernet Frame Types:
  - IEEE 802.2, 802.3, Ethernet II, SNAP
- Supported Ethernet Connections:
  - 10BaseT, 100BaseT (auto-sensing)
- Printer Ports:
  - 1 IEEE 1284 bi-directional Centronics parallel port
- 100-240V (IEC) Auto Switching Power Supply Included
- Powerful RISC Processor

## + Features

- IBM host printing over Ethernet
- Enhanced Telnet 5250e & 3270e
- Printer error reporting to the IBM host
- Page range printing from the IBM host
- Auto configuration (One step setup)
- Off-loading of data conversion
- True IBM printer emulations
- Simultaneous, multi-host printing (TCP/IP, IPX/SPX, NetBIOS, SNA, AnyNet)
- 10BaseT, and 100BaseT
- Powerful RISC processor

## Benefits

- Allows IBM host print jobs to be seamlessly printed over a LAN.
- Communicate with the IBM host using native TCP/IP.
- Prevents loss of IBM host print data by providing same level of print status reporting as a system printer.
- Permits users to print select page ranges from large documents and reports.
- Installs in minutes using native TCP/IP avoiding complex software configurations.
- Eliminates unnecessary IBM host or PC overhead by converting EBCDIC data directly on the I-O 5430e.
- Permits full-function IBM printing on the attached LAN printer.
- Maximizes printer utilization by supporting concurrent printing not only from the IBM host but from Novell, Windows, UNIX, etc.
- Protects print server investment when upgrading the LAN to 100 Mbps.
- Takes advantage of the LAN printer's maximum print speed even when processing IBM host jobs.

Contact your I-O dealer at:

## I-O Corporation

1490 North 2200 West Suite 100, Salt Lake City, Utah 84116  
 Phone: (801) 973-6767 • Fax: (801) 974-5683  
<http://www.iocorp.com>

I-O and the I-O logo are registered trademarks of I-O Corporation. IBM is a registered trademark of International Business Machines Corporation. All other trademarks are the property of their respective companies.



"Products That Work"

